

Reporting your child's absence

To report your child's absence from school, please call the school office before 09:30am on 020 8680 0747 or email attendance@parkhill-inf.croydon.sch.uk

Absence should only occur when a child is unfit to learn, where there is an exceptional circumstance or the child has a day of religious observance.

Your child should be in school unless they are too unwell to learn. If you are unsure of the recommended period for children to be kept away from school for an illness or infection, please use our guide for when children can come to school with an infection—this is available on our website. Alternatively, you can call the school office or check with your GP surgery/ pharmacist.

Medical evidence

Please schedule all non-urgent medical appointments (out of school hours and during school holidays.) If your child attends a medical appointment in school hours, please provide the appointment card/ letter or screenshot of the appointment text to the school office.

We request supporting medical documentation for absences due to illness lasting 3 days or more and the child's attendance is below 90%.



Administering Medications in School

We can administer some medicines in school, including Calpol and Nurofen. You will need to come to the school office to complete a parental consent form for administration of **any medicines**, including Asthma pumps. If your child has Asthma, we will have an Asthma pump to be kept in school along with a copy of their Asthma Care Plan.

Please keep us updated of any changes to your child's medical needs so that we can ensure we have appropriate staff training and access to Individual Healthcare Plans (where required.)



School is the best place for children to be

Being at school keeps children's education on track, so they can achieve their full potential, whilst also benefitting their mental and physical health and wellbeing.

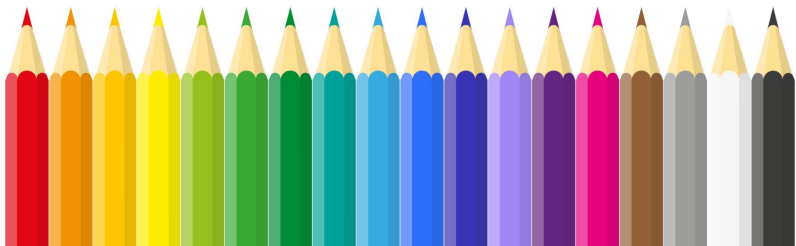
The benefits for children with good attendance and punctuality include:

- More confidence in themselves and their learning
- Greater opportunities to experience extra curricular opportunities available to them at school
- Positive self esteem that comes with knowing they have achieved their best at school
- The ability to make and maintain strong friendships

Research shows that children with poor attendance are at a disadvantage later in life. They often:

- Find it harder to make and maintain friendships
- Are less likely to achieve good grades / qualifications
- Have lower motivation and self-esteem and less confidence in school than their peers

Poor attendance and punctuality, even at the earliest age, can affect achievement later in life so establishing good habits from the start of a child's school life helps children to settle more quickly into their new setting and routines. Regular attendance and good punctuality are important for maximising achievement and gaining the greatest benefit from education.



The Education Welfare Officer (EWO)

Our EWO, Mr Dilley, visits the school every two weeks to monitor attendance and make contact with families for any pupils whose attendance has fallen below the expected level.

As a parent you are **legally responsible** for making sure your child gets a full time education. This means making sure they attend school regularly.

As a school we have a **legal responsibility** to advise parents if their child's attendance is low.

When attendance begins to decline, as a school we may decide to:

- Send out a letter advising you of the decline in your child's attendance
- Invite you to a meeting in school to discuss your child's attendance with a member of the Headship Team to determine if there are any issues preventing your child from attending school regularly
- Make a referral to Mr Dilley
If a referral is made to the EWO:
- Mr Dilley may write to you or phone you to arrange a meeting to further discuss your child's attendance.
- You may be issued with an Attendance Improvement Plan
- You may be referred to the Local Authority for the consideration of a Penalty Notice.

Under section 444 of the Education Act 1996, the Local Authority may issue Penalty Notices to parents/ carers of children with unauthorised absences from school. The fines are issued to each parent, for each child, and are: £60 if paid within 21 days, rising to £120 if paid between 21 and 28 days.

Term time leave

The Education Regulations 2013 make clear that headteachers may not grant any leave of absence during term time unless there are exceptional circumstances.

All family holidays and any term time leave should be arranged to be taken outside of school time.

If you have an exceptional circumstance and wish to request a leave of absence during term time, please complete the request form (available from the office and school website) and return it to the office as far in advance of the requested leave period as possible.

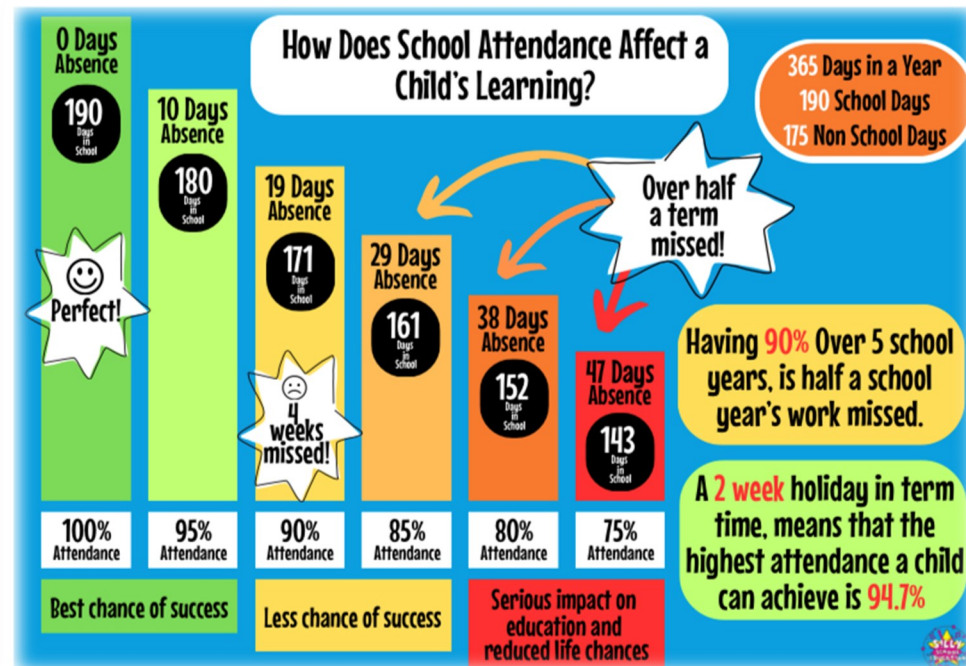
If permission is not granted, but the leave is still taken, you may be referred to our EWO, Mr Dille, and/or the local authority for consideration of a Penalty Notice (fine of £60 per pupil, per parent, rising to £120 if you don't pay within 21 days.)

We will continue to support you and your families in times of crisis and all requests for leave during term time will be considered on an individual basis.



How Attendance is Calculated

Attendance is calculated from the number of sessions in a school year that a pupil is present out of the total number of possible sessions of attendance.



At Park Hill Infant School, we aim for children to achieve at least 96% attendance for a full school year. If your child's falls below 93% you may receive a letter advising you of the decline in your child's attendance. If there is no improvement, you may be invited to a meeting with a member of the Headship team regarding your child's attendance. And how we can work together to improve it.

Less than 90%: at least 19 days absence a year

The Government classes pupils with less than 90% attendance as 'Persistent Absentees.' Parents of pupils in this group may be referred to the Educational EWO and/or may receive a Penalty Notice or legal action taken by the Local Authority.

What You Can Do to Improve Your Child's Attendance and Punctuality

- ⇒ Schedule all non-urgent medical appointments (i.e. GP appointments and dental appointments) out of school hours and during school holidays
- ⇒ Book family vacations during the school holidays
- ⇒ Set a consistent, regular bed time and morning routine—prepare clothes and pack school bags the night before
- ⇒ If your child seems anxious about attending school, talk to their class teacher or a member of the Headship Team for advice and support about how to make your child feel comfortable and excited about learning
- ⇒ Develop 'back-up plans' for getting to school in case of an emergency in the morning. Call on a family member, a neighbour or another parent/ carer
- ⇒ Ensure that your child has a good breakfast to set them up for the day ahead - there is a Breakfast Club at Park Hill Junior School if you need to be at work early
- ⇒ If you are unsure about the recommended period for children to kept away from school for an illness or infection, please use our guide for when children can come to school with an infection (available on our website.) Alternatively, you can call the school office on 0208 680 0747 or check with your GP surgery/ local pharmacist.

We take pride in the efforts and achievements of our children.

The class with the highest attendance per term is rewarded with a Fun Day. The Fun Day could be a mufti-day for the class, a class party with snacks provided by the school, hot chocolate and a film, face painting etc.

Give your child the best start

Every school day is crucial right from the very first day in Reception.

At Park Hill Infant School, children learn through whole class teaching and learning sessions, small group focus activities and independent child led and child initiated learning opportunities.

If children are absent from school, they miss these exciting key learning opportunities resulting in gaps in their knowledge and understanding. This can negatively impact their learning and development.



Our school gates open at 9:00am.

Children need to be in class and ready to learn by 9:10am each day, when the register is called.

Minutes Late:	Equates To:
5 minutes late each day	3 days lost per academic year
10 minutes late each day	6.5 days lost per academic year
15 minutes late each day	10 days lost per academic year
20 minutes late per day	13 days lost per academic year
30 minutes late each day	19 days lost per academic year